

**WARNUNG**

Gefahr des Verlusts der Text-Bild-Zuordnung beim Ausdruck.

- **Aus technischen Gründen kann derzeit nicht ausgeschlossen werden, dass trotz einwandfreier Darstellung auf dem Bildschirm beim Ausdruck der Zusammenhang von Text und zugehörigem Bild verloren geht.**
- **Wird der Fehler nicht bemerkt, besteht die Gefahr, daß Arbeiten nicht korrekt durchgeführt werden und es dadurch zu Personen- und Sachschäden kommt.**

→ Vergleichen Sie deshalb nach dem Druckvorgang unbedingt die Ausdrücke mit der Bildschirmdarstellung. Korrigieren Sie die Ausdrücke im Fehlerfall so, daß der Inhalt der Bildschirmdarstellung zutreffend wiedergegeben wird.

**WARNING**

Danger of losing text-figure correspondence when printing out.

- **For technical reasons, it can currently not be ruled out that the correspondence between text and associated figure can be lost when it is printed out, even though the display on the screen is correct.**
- **If the fault is not noticed, there is the danger that work will not be performed correctly which can cause injury and damage.**

→ Therefore, always compare printouts with the screen display after printing them out. Correct the printouts if they are faulty so that the content of the screen display matches that on the printouts.

**AVERTISSEMENT**

Risque de perte de la correspondance texte-illustration lors de l'impression papier.

- **Pour des raisons techniques, il ne peut pas être exclu à l'heure actuelle que, même en cas d'affichage correct à l'écran, la correspondance entre le texte et l'illustration puisse être erronée sur l'impression papier.**
- **Si l'erreur passe inaperçue, on court le risque d'exécuter certaines opérations de manière incorrecte pouvant conduire à des dommages corporels et matériels.**

→ Comparez impérativement pour cette raison les impressions papier avec l'affichage à l'écran. Corrigez-les en cas d'erreur de manière à reproduire correctement l'affichage à l'écran.

**ATTENZIONE**

Pericolo di perdita dell'abbinamento testo-immagine nella stampa.

- **Per motivi tecnici non è escluso che, nonostante la rappresentazione sullo schermo risulti perfetta, durante la stampa venga persa la corrispondenza fra testo e relativa immagine.**
- **Se tale difetto non viene rilevato vi è il pericolo che i lavori non siano eseguiti correttamente; ciò può avere come conseguenza lesioni e danneggiamenti.**

→ Per questo motivo, dopo la stampa è assolutamente necessario confrontare le stampe con la rappresentazione sullo schermo. In caso di errore si prega di correggere le stampe, così da garantire la riproduzione esatta della rappresentazione sullo schermo.

**ADVERTENCIA**

Al imprimir se corre el riesgo de perder la correcta asignación de las figuras al texto.

- **Por motivos técnicos, por el momento no se puede descartar que, aun siendo correcta la imagen que aparezca en la pantalla, al imprimir se pierda la correlación entre el texto y la figura correspondiente.**
- **Si este error pasara desapercibido, existe el riesgo de que los trabajos no se ejecuten de forma correcta y, por tanto, se produzcan daños personales y materiales.**

→ Por ello le rogamos que tras el proceso de impresión compare siempre las copias impresas con la imagen de la pantalla. En caso de error, corrija las copias impresas de forma que se correspondan con el contenido de la imagen de la pantalla.

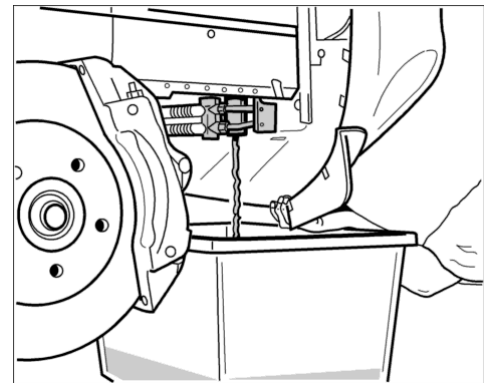
19 78 19 Removing and installing coolant temperature sensor - as of MY 2003

- [Preliminary work](#)
- [Information](#)
- [Removing coolant temperature sensor](#)
- [Installing coolant temperature sensor](#)
- [Subsequent work](#)

Preliminary work

Preliminary work

1. Drain coolant completely. → 193817 Draining and filling coolant (includes bleeding) - chapter on "Draining"
2. Remove intake-air distributor. → 244619 Removing and reinstalling intake-air distributor - chapter on "Removing"

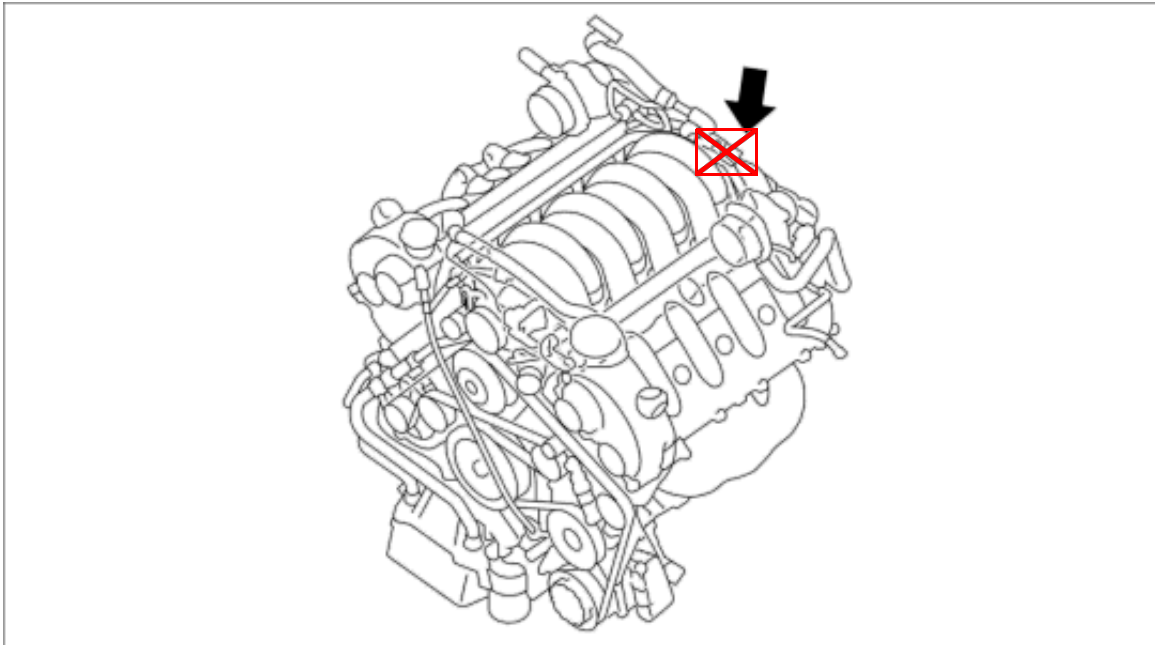


Draining coolant

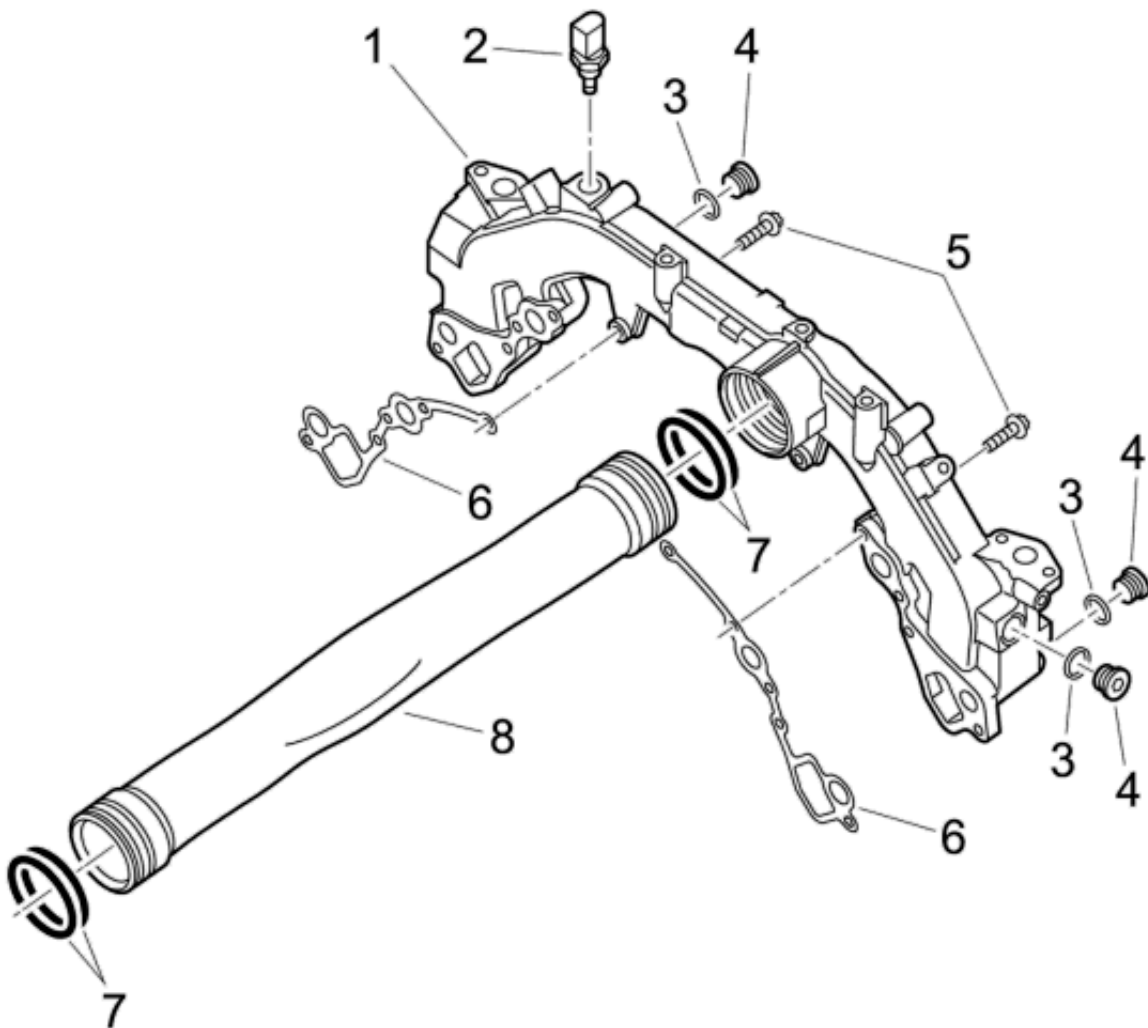
Information

Component overview

Installation Location:



Installation position of coolant temperature sensor



Component overview

- 1 - Distributor pipe
- 2 - Coolant temperature sensor (when removing, collect emerging coolant, when installing, replace sealing ring)
- 3 - Sealing ring (replace when installing)
- 4 - 3 screw plugs, M16x1 (when removing, collect emerging coolant, when installing, replace sealing ring)
- 5 - 10 hexagon-head bolts M6x25
- 6 - 2 seals for distributor pipe (when installing, clean sealing faces and replace seal)
- 7 - 4 sealing rings (when installing, grease with Klüber Syntheso GLEP 1)
- 8 - Lower cooling water tube

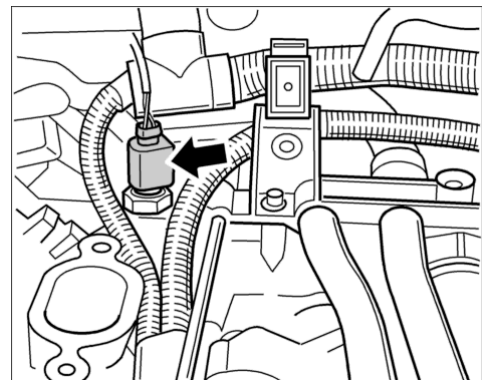
Removing coolant temperature sensor**ATTENTION****Danger of poisoning!**

- **Coolant additives and cleaning liquids are toxic.**
- Swallowing coolant additives and cleaning liquids must be urgently avoided.
- Do not consume any food or drink while working (danger of accidental mixing).
- If swallowed, observe the warning information on the containers and contact a doctor. If necessary, show the doctor the warning information on the packaging.

**ATTENTION****Danger of scalding with hot coolant!**

- Never open the cooling system when it is hot. Emerging coolant may be very hot and can cause scalding.
- The cooling system must be depressurised before being opened.
- Allow engine to cool down.

1. Pull off cable plug of the coolant temperature sensor **-arrow-** .

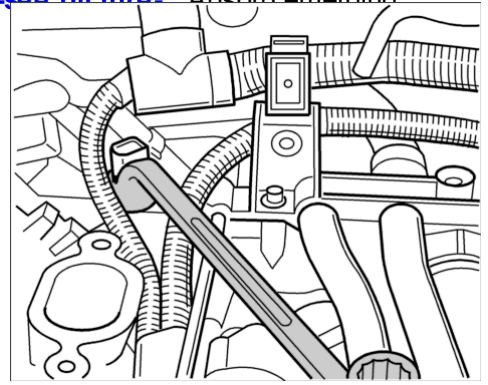


Cable plug of the coolant temperature sensor

**Note**

- *Even when the coolant has been completely drained, coolant emerges from the open bore on the coolant temperature sensor!*

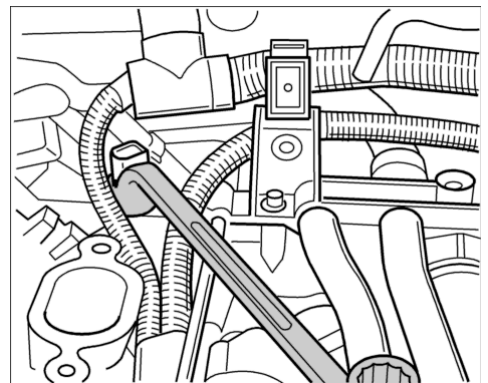
2. Unscrew the coolant temperature sensor using a ring wrench (a/f 22) [-see picture-](#). Absorb emerging coolant.



Unscrewing the coolant temperature sensor

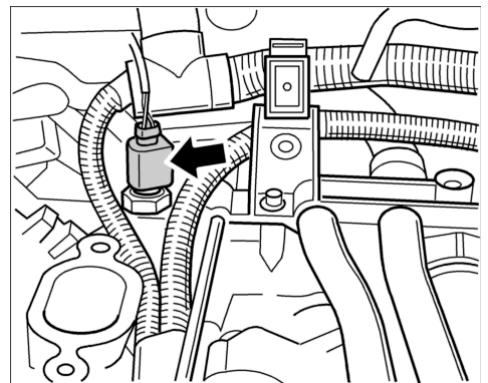
Installing coolant temperature sensor

1. Clean sealing surfaces and screw in coolant temperature sensor with a new sealing ring into the distributor pipe. → **Tightening torque: 22 ftlb.**



Screwing in the coolant temperature sensor

2. Fit cable plug again [-arrow-](#).



Cable plug of the temperature sensor

Subsequent work

Subsequent work

1. Install intake-air distributor. → 244619 Removing and reinstalling intake-air distributor - chapter on "Installing"
2. Fill up completely with coolant and bleed system. → 193817 Draining and filling coolant (includes bleeding) - chapter on "Filling".

as of MY 2003

Country C00, C02, C05, C07, C08, C09, C10, C11, C12, C13, C14, C15, C16, C18, C19, C20, C21, C22, C23, C24, C25, C26, C27, C28, C32, C33, C34, C35, C36, C37, C38, C39, C45, C46, C98, C99